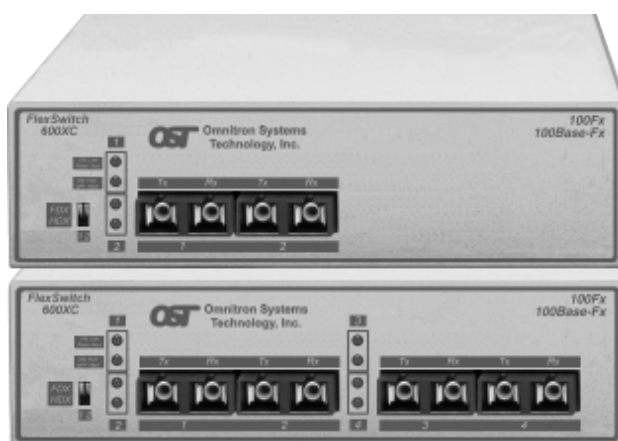


FlexSwitch™ 600XC 2Fx/4Fx

2-Port and 4-Port Fast Ethernet Fiber Compact Switches



FEATURES

- Functions as a 2-port or 4-port Layer 2 Fast Ethernet fiber switch and media converter.
- Supports fiber to fiber links to workstations, servers and other switches.
- Supports 100Base-Fx and IEEE 802.3 specifications.
- Delivers full wire-speed over all ports simultaneously.
- Fiber ports are capable of connecting distances up to 58 km (36 mi.).
- Fiber ports support multimode (MM) and/or single-mode (SM) fiber, SC and/or ST connectors.
- Flow control per 802.3x specification.
- Available with external power adapter or internal power supply.
- Software-independent.
- Lifetime warranty.

DESCRIPTION

The FlexSwitch™ 600XC 2Fx and 4Fx are 2 and 4-port Fast Ethernet fiber switches that can be used as a backbone switch for connecting switched or shared segments using fiber. They maximize and extend network distances and can also be used as media converters to convert half/full duplex operations and multimode, single-mode, short-wavelength, long-wavelength, SC and ST fiber options.

Using the store-and-forward technology with 1-Mbyte buffer memory, the FlexSwitch 600XC 2Fx and 4Fx support a full wire-speed of 148,800 64-byte packets per second (pps) simultaneously on all ports.

As Layer 2 switches, each port of the FlexSwitch 600XC 2Fx and 4Fx is capable of MAC address learning and aging with support for up to 1,000 MAC addresses, as well as packet filtering and forwarding. The FlexSwitch 600XC checks all packets and discards illegal or corrupted packets thus providing fragment-free packet forwarding and enhancing the overall network performance.

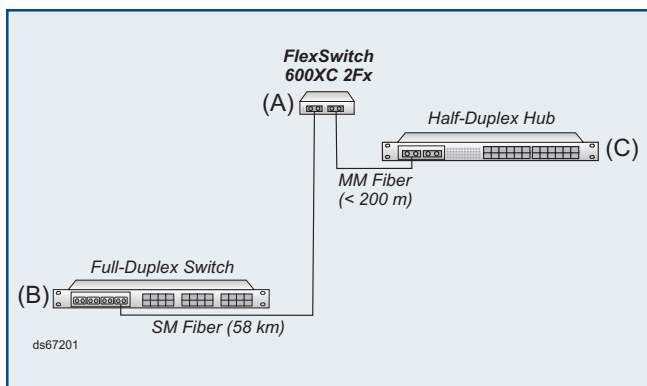
Using the 802.3x advanced flow control specification, the FlexSwitch 600XC controls the flow of data in order to ensure data integrity.

Fast Ethernet fiber ports are available with SC or ST connectors for multimode or single-mode fiber. Distances of 412 m in half-duplex and up to 58 km in full-duplex are supported.

SAMPLE APPLICATIONS

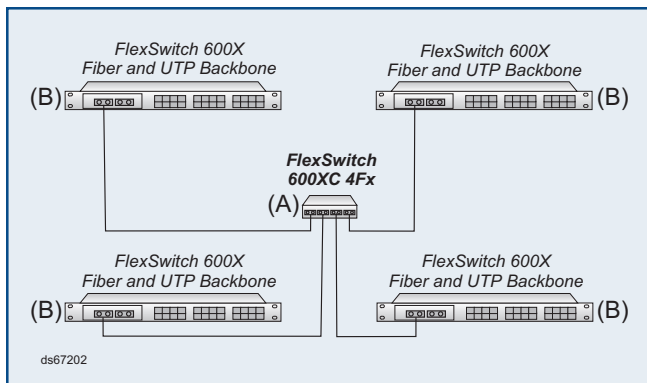
Application 1. Collision Domain

This application shows the integration of full-duplex, single-mode fiber on the switch (B) and half-duplex, multimode fiber on the hub (C). These devices are able to connect using the FlexSwitch 600XC 2Fx switched fiber ports (A). Because of the nature of hubs, the fiber distance between (A) and (C) is up to 200 m. The fiber connection to the switch (B) is capable of reaching distances up to 58 km (36 mi.).



Application 2. Collapsed Backbone

This application shows the integration of four Fast Ethernet (100 Mbps) stand-alone switches (B) connected with single-mode fiber using the FlexSwitch 600XC 4Fx (A) as a collapsed backbone switch. Since all fiber connections are switched and in full-duplex mode, the distances can reach up to 58 km (36 mi.) using single-mode fiber.



SPECIFICATIONS

- **Protocol:** IEEE 802.3
- **Fast Ethernet:** 100Base-Fx
- **Flow Control:** 802.3x
- **Basic Features:**
- **MAC Addresses:** 1,000
- **Buffer size:** 1 MB

Connectors and Cables

- Fiber:
- **Multimode (MM):** 50/125, 62.5/125, 100/140 μ m
- **Single-Mode (SM):** 9/125 μ m

Supported Distances

- **MM/Lx, 1300 nm:** 412 m / 1,350 ft.
- **SM/Lx, 1300 nm:** 412 m / 1,350 ft.
- **SM/Lx/LH, 1300 nm:** 412 m / 1,350 ft.

LED Indicators

- **Function**
- **Fiber:**
- **Off:** No link detected
- **Green On:** Link detected
- **Flashing:** Activity detected
- **Full/Half Duplex:**
- **Off:** Set to half duplex
- **On:** Set to full duplex

Dimensions/Weight:

- **Models 67xx:** W:6.0"xD:4.0"xH:1.75" / 0.5 lb.
- **(External power adapter)**
- **Models 65xx:** W:6.5"xD:8.0"xH:1.75" / 1.5 lb.
- **(Internal power supply)**

Power:

- **External:** 9 VDC/1.2 Amp
- **Internal:** 110/230 VAC, 50/60 Hz, 300 mA

Temperature:

- **Operating:** 0 to 50 degrees C
- **Storage:** -40 to 75 degrees C

Humidity:

- **Humidity:** 0-90% (non-condensing)

ORDERING INFORMATION

<u>Model with</u> <u>External PS</u> <i>(110V, US)</i>	<u>Model with</u> <u>Internal PS</u> <i>(110/230V, Universal)</i>	<u>Port</u> <u>Description</u>
6720-00	6520-00	2@100 MM/SC/Lx fiber
6720-22	6520-22	2@100 SM/SC/Lx fiber
6720-33	6520-33	2@100 SM/SC/Lx/LH fiber
6720-02	6520-02	1@100 MM/SC/Lx fiber + 1@100 SM/SC/Lx fiber
6720-03	6520-03	1@100 MM/SC/Lx fiber + 1@100 SM/SC/Lx/LH fiber
6721-00	6521-00	2@100 MM/ST/Lx fiber
6721-22	6521-22	2@100 SM/ST/Lx fiber
6721-02	6521-02	1@100 MM/ST/Lx fiber + 1@100 SM/ST/Lx fiber
6730-0	6530-0	4@100 MM/SC/Lx fiber
6730-2	6530-2	4@100 SM/SC/Lx fiber
6730-3	6530-3	4@100 SM/SC/Lx/LH fiber
6731-0	6531-0	4@100 MM/ST/Lx fiber
6731-2	6531-2	4@100 SM/ST/Lx fiber

Notes: MM = Multimode SM = Single-mode
LH = Long-haul PS = Power supply

For other configurations, consult factory.

Trademarks are owned by their respective companies.
FlexSwitch is a trademark of Omnitron Systems Technology, Inc.
Specifications subject to change without notice.
©1999-2001 Omnitron Systems Technology, Inc.

**Ost Omnitron Systems
Technology, Inc.**

27 Mauchly #201, Irvine, CA 92618
Tel: (949) 250-6510 Fax: (949) 250-6514
E-mail: info@omnitron-systems.com
http://www.omnitron-systems.com