

# NetOutlook®

## NetOutlook® Network Management Software SNMP Network Management for Omnitron Products

NetOutlook Network Management Software is a robust and secure network management application for Omnitron products. NetOutlook provides remote management of the iConverter® Multi-Service Platform, OmniConverter® and RuggedNet® Ethernet Fiber Switches.

NetOutlook has an intuitive Graphical User Interface (GUI) that provides the ability to remotely monitor network performance, configure hardware parameters, provision services, generate performance reports and perform advanced fault detection.

NetOutlook graphical tree structure provides visibility of all discovered network addresses. This simplifies the management of large networks, and provides instance access and notification of network problems.

Service Providers, Enterprises and Governments can leverage the full capabilities of Omnitron products using NetOutlook Management Software:

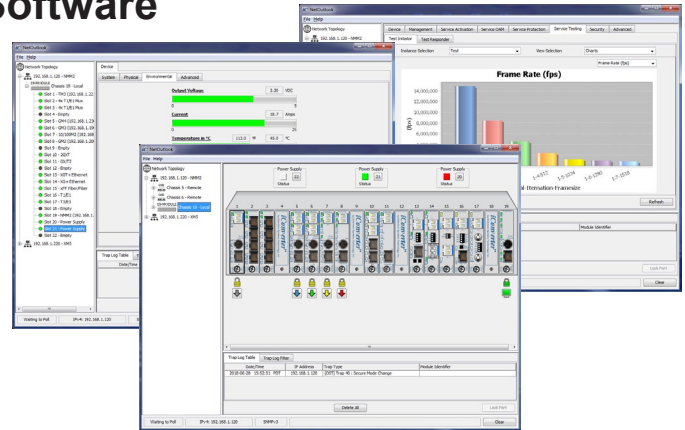
- Lowers operating costs with remote configuration and provisioning which reduces technician trips to equipment
- Improves network reliability with performance monitoring, fault detection and isolation tools
- Increases end user/subscriber satisfaction with comprehensive performance monitoring



**iConverter Multi-Service Platform**



**OmniConverter and RuggedNet Managed  
Ethernet Fiber Switches**



## KEY FEATURES

- Intuitive Graphical User Interface (GUI)
- Real-time trap notification provides network status to identify specific network problems and their locations
- Supports SNMPv1, SNMPv2c and SNMPv3
- IP-less management with IEEE 802.3ah and Omnitron's Secure OAM management channels
- Comprehensive Port MIB statistics in graphical format and 802.3ah performance monitoring
- Reporting of optical performance statistics for SFP transceivers equipped on modules
- SNMP Device Discovery utility that automatically detects Omnitron chassis and modules on the network
- Print Utility for printing status/configuration information
- Made in the USA
- Free lifetime upgrades and 24/7 Technical Support

Network Interface Device functionality includes provisioning and reporting for carrier Ethernet, business services and mobile backhaul configurations:

- RFC 2544 and ITU-T Y.1564 Service Testing
- IEEE 802.1ag Connectivity Fault Management
- ITU-T Y.1731 and RFC 5357 TWAMP Performance Monitoring
- IEEE 1588v2 Transparent Clock and ITU-T G.8262 Synchronous Ethernet
- ITU-T G.8031 and G.8032 Protection Switching
- LAG with LACP - 1+1 and 1:1

NetOutlook serves as a single integrated point of access for compatible Omnitron products. Chassis and module functionality is accessible through NetOutlook including configuration, troubleshooting, maintenance and performance monitoring.

NetOutlook allows network parameters to be remotely configured from a single location, providing a convenient and time-saving solution for large-scale deployments.

### IP-Less Management

Omnitron's secure IP-Less remote management channel allows management of a large number of iConverter modules and chassis through one IP address. It also provides an added level of security for the management channel that is not affected by end-user actions or traffic on the system. The IP address is isolated to a physically secure management station at the network core, and does not exist on the fiber link or on the module at the network edge.

### Fault Notification

NetOutlook provides real-time visibility into the operational state of Omnitron supported equipment:

- Hardware/Software Configuration Change
- Security Events
- Primary/Secondary Link Up/Down Notification
- Dying Gasp Notification

All monitored events are logged and accessible through NetOutlook.

### Remote Configuration

NetOutlook allows remote configuration of all product functionality:

- VLAN membership assignments
- Quality of Service (QoS) prioritization, Port Access Control, Bandwidth Control
- Auto-Negotiation and Duplex Modes
- Link Fault Detection Modes
- DWDM Wavelength Tuning

## ORDERING INFORMATION

Model Number	Description
8100-0	NetOutlook Management Software (Single User License)

### System Requirements

Microsoft compatible PC with Microsoft Windows 2000/2003/XP/Windows7/8/10 and an Ethernet Network Interface Card.

NetOutlook provides the ability to manage, provision and monitor Carrier Ethernet mobile backhaul and business services on iConverter Network Interface Devices.

### Carrier Ethernet Service Management

NetOutlook provides a graphical display of RMON statistics, including bandwidth utilization and network performance, link and data receive/transmit status. 802.3ah Performance Monitoring provides the detection and notification of link performance (quality) faults. NetOutlook can also report optical performance statistics from Small Form Pluggable (SFP) transceivers.

### Provisioning of Service Parameters

NetOutlook supports remote provisioning of Ethernet Virtual Connections (EVCs), including 802.1ad Provider Bridge VLAN stacking (Q-in-Q) for service multiplexing, Class of Service (CoS), granular rate-limiting, per-flow service mapping and traffic policing and shaping with Hierarchical Rate Limiting.

### Service Testing and Validation

When used with the GM4 or XM5 NID, NetOutlook supports ITU-T Y.1564 and RFC 2544 service testing to rapidly verify the configuration and performance of Ethernet services prior to customer hand off.

### ITU-T Y.1731 Performance Monitoring

NetOutlook can be used to monitor and generate reports for key SLA parameters, including Frame Delay, Frame Delay Variation, Frame Loss and Availability.

### IEEE 802.1ag Connectivity Fault Management (CFM)

NetOutlook supports IEEE 802.1ag Connectivity Fault Management (CFM) to proactively monitor service availability and provide tools for rapid fault isolation.

### Protection Switching

NetOutlook can be used to configure several protection switching protocols.

- **ITU-T G.8031 and G.8032**

G.8031 ELPS and G.8032 ERPS provides sub-50ms redundancy fail over.

- **IEEE 802.1ax (802.3ad)**

Link Aggregation with Link Aggregation Control Protocol (LACP) supporting active/standby and active/active operation.