

iConverter® 5-Module Chassis Managed Redundant Power Chassis

The iConverter 5-Module Chassis is designed for Enterprise Local Area Network (LAN) and Metropolitan Area Network (MAN) applications where fault tolerance and reliability are essential. The 1U (1.75 inch) high iConverter 5-Module Chassis has redundant power supplies and can be mounted in a 19-inch or 23-inch rack.

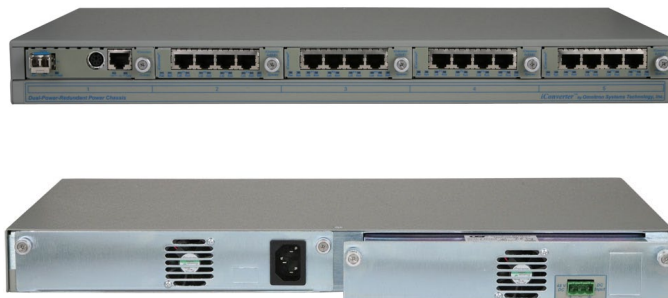
The 5-Module Chassis features two hot-swappable redundant power supplies. Universal AC, 24VDC and 48VDC powering options are available. The redundant power supplies operate in load-sharing mode to reduce the burden on each power supply to extend the lifetime and fault tolerance.

Power is provided to up to five iConverter modules via the chassis backplane. When used with an iConverter management module, the management capabilities include the ability to monitor the voltage, current and temperature of each power supply. Any out of range violation can trigger an SNMP trap to allow quick corrective maintenance.

In addition to handling the power and management data for each iConverter module, the 5-Module Chassis backplane allows sharing of Ethernet data between the individual modules. iConverter modules that are installed in adjacent slots and equipped with Ethernet backplane ports have the ability to connect to each other via the chassis' Ethernet backplane and facilitate a variety of flexible management options including unmanaged, out-of-band managed, in-band managed and multi-port configurations.

The high reliability of the redundant power system combined with its AC and DC power options and its ability to hold five converters in a 1U height make the 5-Module Chassis the ideal choice in a Central Office (CO), Customer Premises (CPE), multi-tenant (MTU) or for Point of Presence (POP) applications where reliability and space are critical.

The iConverter 5-Module Chassis supports the entire family of iConverter fiber media converters. All iConverter modules are hot-swappable and support multiple mounting options. In addition to the 5-Module Chassis, they can be mounted in a 19-Module (2U, 3.5 inch high) space-saving rack-mountable chassis (19-inch or 23-inch) with triple redundant AC, 24VDC and 48VDC power supplies, in a 2-Module AC or 18-60VDC power chassis or in a 1-Module AC power chassis.



Modules not included

KEY FEATURES

- The iConverter 5-Module Chassis is 1U (1.75 inch) high and supports 19-inch or 23-inch rack mounts
- Redundant, hot-swappable AC, 24VDC and 48VDC power supplies for mission critical networks
- NEBS Level 3 Compliant
- Ethernet backplane allows modules to share data and support a wide variety of network applications
- Fiber Cable Management Tray available for high-density CWDM deployments
- All iConverter modules are hot-swappable when used with the 5-Module Chassis
- Management is available with the addition of a management module to the chassis
- SNMP management via NetOutlook® provides real-time port and module status information, remote parameter configuration and trap notification
- Commercial (0 to +50° C), wide (-40 to +60° C) and extended (-40 to +75° C) temperature ranges
- TAA, BAA and NDAA compliant, and Made in the USA
- Lifetime Warranty and free 24/7 Technical Support

MANAGEMENT

Management provides remote configuration, monitoring and trap notification. Management of the chassis and modules is accomplished by installing an iConverter Management Module (NMM2) or Network Interface Device (NID) in the same chassis.

The Management Module can be accessed via SNMP, Telnet and serial port. The chassis and modules can be managed with Omnitron's intuitive, graphic-oriented NetOutlook SNMP Management Software or third party SNMP management software. Management via the Telnet and the serial interfaces have an easy-to-use, menu-driven interface.

Fixed parameters that can be monitored on the 19-Module Chassis include the chassis type and model, manufacturing information, along with hardware and software revisions and serial numbers of the power supplies.

In addition, the power supply modules can generate SNMP traps for out of voltage or chassis temperature range violations. All of these events can selectively enabled or disabled to generate SNMP traps.

SPECIFICATIONS

Description	5-Module AC	5-Module AC* High Airflow	5-Module 24VDC	5-Module 48VDC	5-Module 48VDC* High Airflow
Model Number	8220-x	8221-x	8226-x	8225-x	8227-x
Module Capacity	5				
Power Supply Capacity	1 or 2 Hot-Swappable Power Supplies				
Regulatory Compliance	Safety: UL, cUL, CE, NEBS Level 3, UKCA EMI: FCC Class A ACT: TAA, BAA, NDAA				
Environmental	RoHS, WEEE, REACH				
Input Power Requirements (typical)	100 to 240VAC 50/60Hz 0.5A @ 120VAC	100 to 240VAC 50/60Hz 1.5A @ 120VAC	+/- 18 to 36VDC 1.4A @ 24VDC	+/- 36 to 60VDC 0.7A @ 48VDC	+/- 36 to 60VDC 2.0A @ 48VDC
Output Power	33 watts 10A @ 3.3VDC	66 watts 20A @ 3.3VDC	33 watts 10A @ 3.3VDC	33 watts 10A @ 3.3VDC	66 watts 20A @ 3.3VDC
Input Power Connector	IEC 320 Socket	IEC 320 Socket	3-Pin Terminal (Isolated)	3-Pin Terminal (Isolated)	3-Pin Terminal (Isolated)
Dimensions W x D x H	17.5" x 9.0" x 1.75" (444.5 mm x 228.6 mm x 44.5 mm)				
Weight	With 1 Power Supply: 7.5 lbs (3.40 kg) With 2 Power Supplies: 9.0 lbs (4.08 kg)				
Temperature	Commercial: 0 to 50°C Wide: -40 to 60°C Extended: -40 to 75°C - DC models only Storage: -40 to 80°C				
Humidity	5 to 95% (non-condensing)				
Altitude	-100m to 4,000m				
MTBF (hrs)	1 Power Supply: 43,000 2 Power Supplies: 173,000	90,000	49,700 198,000	49,700 198,000	90,000
Warranty	Lifetime warranty with 24/7/365 free Technical Support				

* Agency compliances are pending.

Standard Models



High Flow Models



ORDERING INFORMATION

Step 1: Choose a Base Part Number (xxxx-pt)

Model Number	Model Type	Power Description
8220-pt	5-Module Chassis with 33 watt AC Power Supply	IEC 320 Socket, 100 to 240VAC, 50/60Hz, 0.5A @ 120VAC, with US Power Cord
8221-pt	5-Module Chassis with 66 watt High Airflow AC Power Supply	IEC 320 Socket, 100 to 240VAC, 50/60Hz, 1.5A @ 120VAC, with US Power Cord
8225-pt	5-Module Chassis with 33 watt 48 VDC Power Supply	Direct DC 3-Pin Terminal, +/- 36 to 60 VDC, 0.7A @ 48VDC, no Power Cord
8226-pt	5-Module Chassis with 33 watt 24 VDC Power Supply	Direct DC 3-Pin Terminal, +/- 18 to 36 VDC, 1.4A @ 24VDC, no Power Cord
8227-pt	5-Module Chassis with 66 watt High Airflow 48 VDC Power Supply	Direct DC 3-Pin Terminal, +/- 36 to 60 VDC 2.0A @ 48VDC, no Power Cord

High Airflow power supplies (66W) cannot be installed in the same chassis with other types of power supplies.
 Use the [Power Calculator](#) to determine the iConverter chassis power supplies required for your module configuration.
 High Airflow power supplies are required for iConverter XG+, XGT+ and GM4 installations. Refer to [Application notes](#).
 The 5-Module chassis does not support dying gasp.
 Contact Omnitron for other operating temperatures and RoHS (5/6) compliant models.

Step 2: Choose the number of Power Supplies (xxxx-pt)

1 = One power supply installed in the chassis
2 = Two power supplies installed in the chassis
9 = Spare power supply, chassis not included

Step 3: Choose an Operating Temperature Range (xxxx-pt)

<leave blank> = Commercial temperature (0 to 50°C)
W = Wide temperature (-40 to 60°C)
Z = Wide temperature (-40 to 75°C) - DC models only

ACCESSORIES

Model Number	Description
8090-0	Blank Module Panel
8092-1	19" Rack Mount Kit (included with chassis)
8092-2	23" Rack Mount Kit
8092-3	ETSI Rack Mounting Kit
8096-1	19" Cable Management Tray
8096-2	23" Cable Management Tray

See [Chassis and Mounting Options product page](#)

© 2024 Omnitron Systems Technology, Inc. All rights reserved. iConverter and NetOutlook are Registered Trademarks of Omnitron Systems Technology, Inc. Trademarks are owned by their respective companies. Specifications are subject to change without notice.

