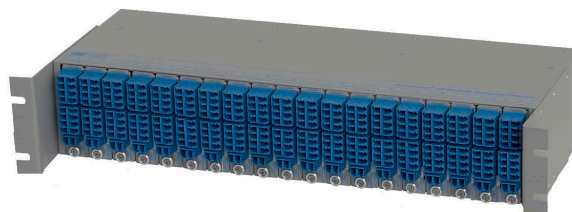
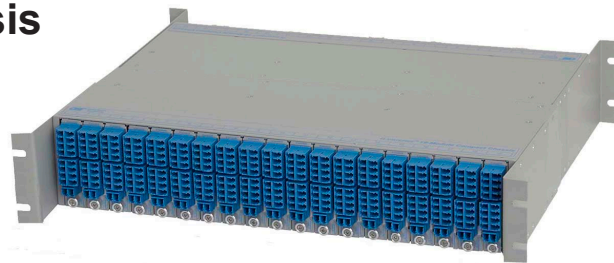


iConverter® 19-Module Compact Chassis 38-Module Dual Chassis and 19-Module Single Chassis



The iConverter 19-Module Compact Chassis provides an innovative approach to increase the number of CWDM or DWDM connections in a 2U (3.5 inch) high rack space. The short chassis design allows two chassis to be connected back-to-back supporting up to 38 CWDM or DWDM modules. This configuration provides up to 684 connectors or up to 608 simplex channels or 304 duplex channels.

The 19-Module Compact Chassis is designed for passive iConverter CWDM/DWDM modules that do not require power. The Chassis can be ordered as a single, front-loading chassis or as a dual front and rear loading chassis kit. The single chassis supports up to 19 modules and the dual chassis kit supports up to 38 modules. The single chassis can be upgraded to support rear loading by ordering another single chassis and optional coupling brackets.

This unique design allows the modules to be installed in the front or rear chassis providing the ideal configuration for high-density CWDM/DWDM fiber distribution applications.

The top image depicts a dual, front and rear loading chassis, and the lower image depicts a single, front-loading chassis. Both are shown with optional CWDM modules (ordered separately).

SPECIFICATIONS

Model Number	8210-1	8210-2
Module Capacity	19	38
Dimensions W x D x H	17.15" x 6.0" x 3.5" (435.6 mm x 152.4 mm x 88.9 mm)	17.15" x 12.0" x 3.5" (435.6 mm x 304.8 mm x 88.9 mm)
Weight	7.1 lbs. (3.22 kg)	14.5 lbs. (6.58 kg)
Humidity	5 to 95% (non-condensing)	
Altitude	-100m to 4,000m	
Warranty	Lifetime warranty with product registration	

ORDERING INFORMATION

Model Number	Description
8210-1	Single Front-Loading 19-Module Compact Chassis with two 19" Rack Mount Brackets
8210-2	Dual Front and Rear Loading 19-Module Compact Chassis Kit with four 19" Rack Mount Brackets and two Coupling Brackets
8097-2	Coupling Brackets (set of 2)
8091-2	23" Rack Mount Brackets (set of 2)
8096-1	19" Cable Management Tray
8096-2	23" Cable Management Tray

© 2024 Omnitron Systems Technology, Inc. All rights reserved. iConverter is a registered trademark of Omnitron Systems Technology, Inc. Trademarks are owned by their respective companies. Specifications subject to change without notice.