

iConverter® 10FL/T

10BASE-T to 10BASE-FL Managed Ethernet Media Converter

The iConverter 10FL/T managed media converters are members of the modular iConverter product family, and provide 10BASE-T copper to 10BASE-FL fiber conversion.

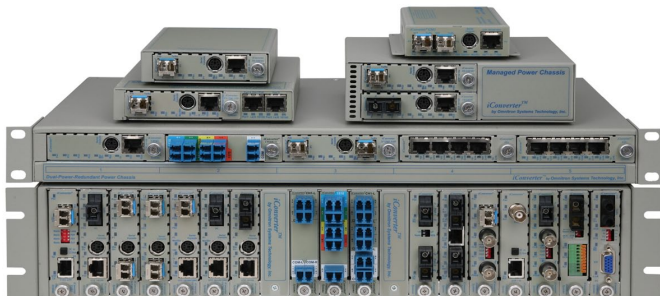
The iConverter 10FL/T models support multimode and single-mode dual fiber with ST, SC and LC connectors; and single-mode single-fiber with SC connectors. The RJ-45 port supports 10BASE-T in either Half or Full-Duplex mode. A UTP crossover switch eliminates the need for a crossover cable and facilitates connectivity to network equipment such as hubs, switches and workstations.

The 10FL/T features user-selectable Link Propagate and Remote Fault Detection modes to facilitate quick fault detection, isolation and reporting.

The iConverter 10FL/T can be used in managed or unmanaged applications. Management provides remote configuration, monitoring and trap notification. Management of the 10FL/T is accomplished by installing an iConverter Management Module (NMM2) or Network Interface Device (NID) in the same chassis.

The management software can override the physical DIP-switch settings such as Link Propagate or Remote Fault Detection. The module supports SNMP trap notification for the monitoring and notification of different network events.

iConverter 10FL/T modules are hot-swappable and can be mounted in a 19-Module (2U high) or 5-Module (1U high) rack-mountable chassis (19-inch or 23-inch) with redundant AC, 24VDC or 48VDC power supplies. They can also be mounted in a 2-Module AC or 18 to 60VDC powered chassis, or in a 1-Module AC or DC powered chassis.



The iConverter Multi-Service Platform consists of Network Interface Devices, T1/E1 multiplexers, CWDM/DWDM multiplexers and managed media converters that combine to deliver Carrier Ethernet and TDM services over fiber or CWDM/DWDM wavelengths.



KEY FEATURES

- 10BASE-T copper to 10BASE-FL fiber converter
- Supports multimode, single-mode dual fiber with ST, SC and LC connectors, and single-mode single-fiber with SC connectors
- RJ-45 port automatically supports Half or Full-Duplex 10Mbps Ethernet
- UTP crossover switch eliminates the need for a crossover cable
- User-selectable link fault detection modes facilitate quick fault detection, isolation and reporting
- Automatic Link Recovery
- LED displays for immediate visual status of each port
- Modules are hot-swappable in 19-Module, 5-Module, 2-Module or 1-Module chassis
- Management is available with the addition of a management module to the chassis
- SNMP management via NetOutlook® provides real-time port and module status information, remote parameter configuration and trap notification
- Commercial (0 to 50°C) and wide (-40 to 60°C) temperature ranges
- TAA, BAA and NDAA compliant, and Made in the USA
- Lifetime Warranty and free 24/7 Technical Support

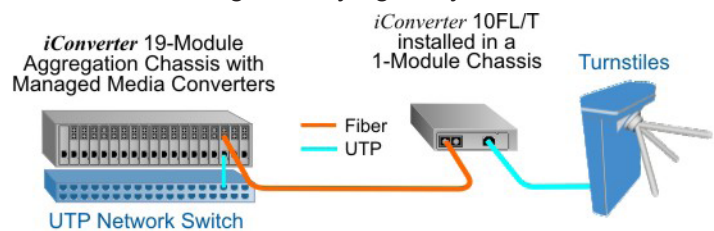
SPECIFICATIONS

Description	<i>iConverter 10FL/T</i> 10BASE-T Copper to 10BASE-FL Fiber Media Converter	
Standard Compliances	IEEE 802.3	
Regulatory Compliances	Safety: EMI ACT:	UL, cUL, CE, NEBS Level 3, UKCA FCC Class A TAA, BAA, NDAA
Environmental	RoHS, WEEE, REACH	
Frame Size	Unlimited	
Port Types	Copper: Fiber:	10BASE-T (RJ-45) 10BASE-FL (ST, SC, LC)
Cable Types	Copper: Fiber:	EIA/TIA 568A/B, Cat 5 UTP and higher Multimode: 50/125µm, 62.5/125µm Single-mode: 9/125µm
DC Power Requirements	DC Input: (Backplane)	3.3VDC, 1.0A @ 3.3VDC
Dimensions W x D x H	0.85" x 4.5" x 2.8" (21.6 mm x 114.3 mm x 71.1 mm)	
Weight	8 oz. (226.8 grams)	
Temperature	Commercial: Wide: Storage:	0 to 50°C -40 to 60°C -40 to 80°C
Humidity	5 to 95% (non-condensing)	
Altitude	-100m to 4,000m	
MTBF (hrs)	830,000	
Warranty	Lifetime warranty and 24/7/365 free Technical Support	

APPLICATION

In the application below, a FlexPoint 10FL/T media converter is used to connect a Turnstile that is located beyond the distance supported by the copper infrastructure. Turnstile can be located in areas such as Mass Transit Stations, Airports, Stadiums, Amusement Parks, Office Lobbies, Ski Resorts and Casinos.

At the head end, a FlexPoint 10FL/T fiber-to-copper media converter is used to convert the copper connection from the network switch to fiber. The fiber cabling extends out to the FlexPoint 10FL/T that converts the fiber to coax and connects to the Turnstile. The network switch gathers data from the Turnstile, allowing or denying entry.



ORDERING INFORMATION

Step 1: Choose a Base Part Number (xxxx-xt)

Fiber Type	Distance	Connector Type			Tx / Rx Lambda (nm)	Min. Tx Power (dBm)	Max. Tx Power (dBm)	Min. Rx Power (dBm)	Max. Rx Power (dBm)	Min. Attenuation (dB)	Link Budget (dB)
		ST	SC	LC							
MM/DF	2km	8300-0t	8302-0t	-	850 / 850	-21	-11	-31	-11	-	10
MM/DF	5km	8300-1t	-	-	1310 / 1310	-24	-14	-31	-14	-	7
SM/DF	30km	8301-1t	8303-1t	8307-1t	1310 / 1310	-15	-8	-31	-8	-	16
SM/DF	60km	8301-2t	8303-2t	8307-2t	1310 / 1310	-5	0	-31	-3	3	26
SM/DF	120km	-	8303-3t	8307-3t	1550 / 1550	-5	0	-31	-3	3	26
SM/SF ¹	20km	-	8310-1t	-	1310 / 1550	-15	-5	-30	-3	-	15
SM/SF ¹	20km	-	8311-1t	-	1550 / 1310	-15	-5	-30	-3	-	15
SM/SF ¹	40km	-	8310-2t	-	1310 / 1550	-8	0	-30	-3	3	22
SM/SF ¹	40km	-	8311-2t	-	1550 / 1310	-8	0	-30	-3	3	22

¹ When using single-fiber (SF) models, the Tx wavelength on one end has to match the Rx wavelength on the other.

MM = Multimode, SM = Single-mode, DF = Dual Fiber, SF = Single-fiber

Contact Omnitron for other configurations, extended temperature (-40 to 75°C) and RoHS (5/6) compliant models.

Step 2: Choose an Operating Temperature Range (xxxx-xt)

<leave blank> = Commercial temperature (0 to 50°C)
W = Wide temperature (-40 to 60°C)

© 2025 Omnitron Systems Technology, Inc. All rights reserved. *iConverter* and *NetOutlook* are Registered Trademarks of Omnitron Systems Technology, Inc. Trademarks are owned by their respective companies. Specifications are subject to change without notice.

