

### FlexSwitch™ 10GR/Sx

#### Unmanaged 24 Port 10Gigabit Ethernet Switch

The FlexSwitch 10GR/Sx is an unmanaged Ethernet switch that features two 1/10G SFP/SFP+ or multi-gigabit/multi-rate RJ-45 uplink ports and twenty-four 10/100/1000 RJ-45 copper ports. This layer 2 switch is ideal for connecting computers and servers in a high density office environment,

The RJ-45 uplink ports support multi-gigabit/multi-rate speeds of 100Mbps, 1Gbps, 2.5Gbps, 5Gbps and 10Gbps.

The switch supports Dual Device mode, Directed Switch mode and Redundant Uplinks.

Dual Device mode enables the switch to operate as two independent and isolated switches. In Dual Device mode, the switch provides separate and independent traffic paths, each supporting one uplink port and twelve user ports.

Directed Switch mode directs multicast traffic (such as video) only to the appropriate uplink port, preventing the multicast video traffic from flooding other network ports.

Redundant fiber or copper uplinks provide protection and restoration for critical applications. In the event of a failure on the primary uplink port, the switch will failover to the secondary uplink port.

For daisy-chain applications, the second uplink port can be used to cascade multiple switches.

The mode of operation is configured using easily accessible DIP-switches. Each DIP-switch function is labeled on the front of the FlexSwitch for ease of identification and use.

The switches feature Small Form Pluggable (SFP) transceiver receptacle ports supporting a variety of copper and fiber transceivers. It supports multi-gigabit copper transceivers and 1G and 10G fiber transceivers in standard, CWDM and DWDM wavelengths.

An alarm relay is available to detect the status of the input power to the switch. The relay contact can be configured for normally open or normally closed operation. One alarm input is available for detecting external events such as door open or closed.

The switch can be 19" rack mounted using the attached rack-mount brackets. They are available with an internal 100 to 240V AC power supply or with a DC terminal connector.



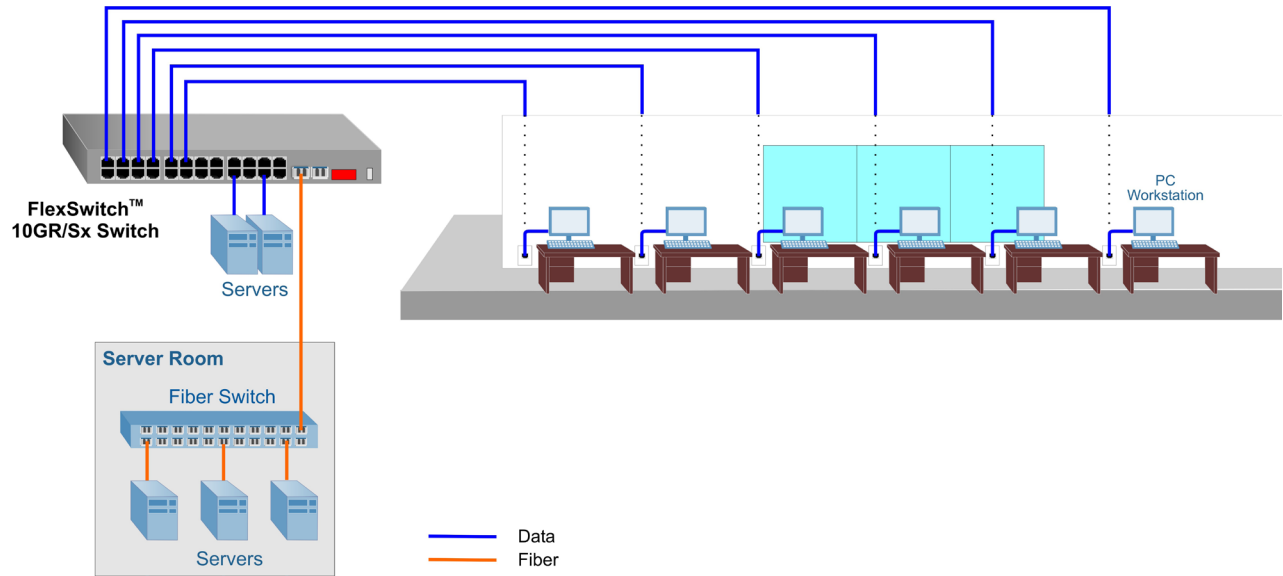
### KEY FEATURES

- 19" Rack-Mounted Unmanaged 24 port Ethernet switch
- Dual Device mode for operating as two separate switches
- Directed Switch mode prevents flooding of multicast video traffic
- Uplink redundancy
- Two SFP/SFP+ transceiver uplink ports or multi-gigabit/multi-rate copper ports
- 1/10G SFP/SFP+ standard/CWDM/DWDM fiber transceiver uplink ports
- SFP/SFP+ uplink ports support copper and fiber transceivers
- Multi-gigabit/multi-rate RJ-45 uplink ports support speeds of 100Mbps, 1Gbps, 2.5Gbps, 5Gbps and 10Gbps
- Twenty-four 10/100/1000 RJ-45 user ports
- Alarm contacts and sensors
- Internal AC to DC Power Supply or DC terminal connector
- Commercial (0° to 50°C), wide (-40° to 60°C) and extended (-40° to 75°C) operating temperature ranges
- TAA, BAA and NDAA compliant, and Made in the USA
- Free 24/7/365 Technical Support

# APPLICATION

## Office Application

In this application example, a FlexSwitch 10GR/Sx switch is providing connectivity to multiple Workstations in an office environment. Additional workstations can be connected. Local and remote servers are connected either directly to the switch or connected via fiber to the Server Room.



# SPECIFICATIONS

<b>Description</b>	<b>FlexSwitch 10GR/Sx</b> Unmanaged 10Gigabit Ethernet Switch with Multi-Gigabit/Multi-Rate Uplink Ports
<b>Standard Compliances</b>	IEEE 802.3,
<b>Regulatory Compliances (*Pending)</b>	<p>Safety*: UL 62368-1, UL 60950-1, IEC 62368-1, IEC 60950-1, EN 62368-1, EN 60950-1, CAN/CSA C22.2 No. 62368-1-14, CAN/CSA C22.2 No. 60950-1, CE Mark, UKCA</p> <p>EMC: EN 55032/24 CE Emissions/Immunity, IEC 61000-6-4 Industrial Emissions, IEC 61000-6-2 Industrial Immunity</p> <p>EMI: CISPR 32, FCC 47 Part 15 Subpart B Class A</p> <p>EMS: IEC 61000-4-2 ESD: Contact: 6 kV; Air: 8 kV, IEC 61000-4-3 RS: 80 MHz to 1 GHz: 10 V/m, IEC 61000-4-4 EFT: Power: 2 kV; Signal: 1 kV (DC models), IEC 61000-4-4 EFT: Power: 1 kV; Signal: 1 kV (AC models), IEC 61000-4-5 Surge: Power: 2 kV; Signal: 2 kV (DC models), IEC 61000-4-5 Surge: Power: 1 kV Line/Line; 2 kV Line/Gnd; Signal: 2 kV (AC models), IEC 61000-4-6 CS: Signal: 10 V, IEC 61000-4-8 (Magnetic Field) 30A/m, IEC 61000-4-11 (Voltage Dips, interrupts)</p> <p>IP Rating: IP20 Protection</p> <p>ACT: TAA, BAA, NDAA</p>
<b>Environmental</b>	REACH, RoHS and WEEE
<b>Frame Size</b>	Up to 10,240 bytes
<b>Port Types</b>	<p>Copper: 100/1000BASE-T, 2.5GBASE-T/5GBASE-T/10GBASE-T (RJ-45 Uplink Ports) 10/100/1000BASE-T (RJ-45 User Ports)</p> <p>SFP/SFP+: 10GBASE-X Fiber Transceivers, 10GBASE-T Copper Transceivers 1000BASE-X Fiber Transceivers, 1000BASE-T Copper Transceivers 10/100/1000BASE-T SGMII Copper Transceivers</p>
<b>Cable Types</b>	<p>Copper: RJ-45 User Ports EIA/TIA 568A/B, Cat 5 UTP and higher RJ-45 Uplink Ports 10BASE-T: Cat 3, 4, 5, 5e, 6, 6A 100BASE-TX: Cat 5, 5e, 6, 6A 1G/2.5G: 4-pair Cat 5e, 6, 6A, 7 5G: 4-pair Cat 6, 6A, 7 10G: 4-pair Cat 6A, 7</p> <p>Fiber: Multimode: 50/125, 62.5/125µm Single-mode: 9/125µm</p>
<b>AC Power Requirements (Internal AC Power Supply)</b>	100 - 240VAC/50 - 60Hz 1.5A max at 115VAC, 1.0A max at 230VAC IEC 320 Socket
<b>DC Power Requirements (Models with DC Terminals)</b>	+12 to +57VDC; 0.67A @ 56VDC 4 Pin Terminal (isolated)
<b>Alarm Contact (Output)</b>	2 form C Relay for Normally Open and Normally Closed Operation 110VDC/125VAC Maximum Voltage, 2A Maximum Current
<b>Alarm Sensor (Input)</b>	2.0ma @ 3.3VDC Closure Detection
<b>Dimensions (W x D x H)</b>	17.375" x 14" x 1.75" (441.3 mm x 355.6 mm x 44.45 mm)
<b>Weight</b>	8.9 lbs (4037 grams)
<b>Operating Temperature</b>	Commercial: 0 to 50°C Wide: -40 to 60°C (-20°C AC cold start) Extended: -40 to 75°C Storage: -40 to 80°C
<b>Humidity</b>	5 to 95% (non-condensing)
<b>Altitude</b>	-100m to 4,000m (operational)
<b>MTBF (hours)</b>	AC Model: 49,800 DC Model: 81,000
<b>Warranty</b>	5 year product warranty with 24/7/365 free Technical Support

# ORDERING INFORMATION

## Step 1: Choose the Base Part Number (6905-x0-0pt)

Model Number	Description
6905-00-0pt	FlexSwitch 10GR/Sx 2 x SFP/SFP+ uplink ports, 24 x 10/100/1000 ports, rack mount
6905-10-0pt*	FlexSwitch 10GR/Sx 2 x 100/1G/2.5G/5G/10G RJ-45 uplink ports, 24 x 10/100/1000 ports, rack mount

Contact Omnitron for other fiber options. Order the appropriate SFPs separately. [Visit the Omnitron Optical Transceivers web page.](#)

## Step 2: Choose the Power Option (6905-x0-0pt)

1 = IEC 320 Socket, Internal 100 - 240 VAC Power Supply, with Power Cord
9 = Direct DC terminal connector, 12V to 57VDC

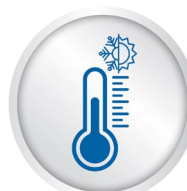
## Step 3: Choose the Operating Temperature Range Option (6905-x0-0pt)

<leave blank> = Commercial temperature (0 to 50°C)
W = Wide temperature (-40 to 60°C)
Z = Extended temperature (-40 to 75°C)

\*Contact Omnitron about the availability of the 2xRJ-45 model

# ACCESSORIES

Model Number	Description
8092-1	19" Rack Mount Kit (included with chassis)
8092-2	23" Rack Mount Kit
8092-3	ETSI Rack Mounting Kit



©2026 Omnitron Systems Technology, Inc. OmniConverter is a registered trademark of Omnitron Systems Technology, Inc. Trademarks are owned by their respective companies. Specifications subject to change without notice. All rights reserved.

