

### FlexPoint™ 10FL/T 10BASE-T to 10BASE-FL Copper to Fiber Media Converter

The FlexPoint 10FL/T is a 10BASE-T copper to 10BASE-FL fiber media converter that provides reliable and cost-effective network connectivity and fiber extension.

The RJ-45 port auto-negotiates the duplex mode of the attached device for plug-and-play installations. The port detects and corrects wiring polarity reversals, and features a crossover switch that eliminates the need for a crossover cable and facilitates connectivity to network equipment such as hubs, switches and workstations.

The fiber port operates at 850nm, 1310nm or 1550nm, and features ST or SC connectors. Multimode fiber models support distances of up to 5km, and single-mode fiber models support distances of up to 120km.

The FlexPoint 10FL/T supports Link Propagate, which is a fault detection tool that provides a local indication of a remote link loss by disabling the port and propagating the loss of link from one port to the other.

The FlexPoint 10FL/T features descriptions of the LED indicators on the label for easy in-the-field installation and maintenance. The LEDs report the availability of power, port activity and link status, speed and duplex modes.

FlexPoint modules can be mounted utilizing optional wall-mounting hardware or with DIN-rail mounting brackets. They can also be rack-mounted in a 5-Module shelf or in a high-density 14-Module, power-redundant Powered Chassis.

FlexPoint modules installed in the 5-Module shelf or used as standalone devices can be powered by an external AC to DC power adapter, or through the 5VDC chassis connector. Standalone modules can also be powered by attaching an external DC power supply (18-60VDC). When used in the 14-Module power-redundant Powered Chassis with any combination of AC and DC power supplies, the installed modules are powered via the 5VDC chassis connector.

The wide variety of FlexPoint mounting and power options provide flexible upgrade paths as network requirements change and grow.

FlexPoint unmanaged media converters are easy to use and provide dependable fiber connectivity in Enterprise and Government networks around the world.

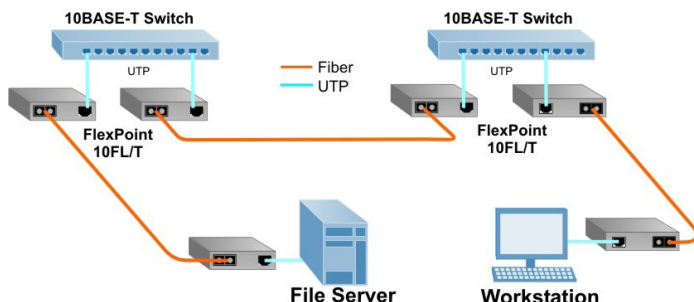


### KEY FEATURES

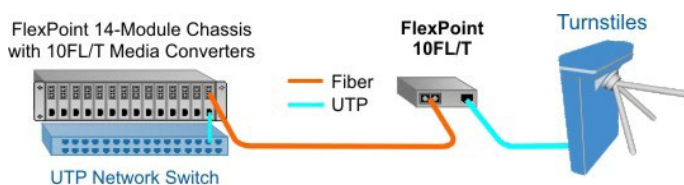
- 10BASE-T copper to 10BASE-FL fiber media converter
- RJ-45 port automatically supports Full or Half-Duplex
- Features a crossover switch for easy connection to hubs, switches or workstations
- Extends network distances up to 120km
- Supports Link Propagate for the remote detection of link faults
- Supports most network interfaces with a wide variety of cable and connector types
- Labeled status LEDs for quick and easy installation
- Wall-mount or rack-mount on a 5-Module shelf or in a 14-Module power-redundant FlexPoint Powered Chassis
- Completely software independent with no installation of drivers required
- TAA, BAA and NDAA compliant, and Made in the USA
- Peace-of-mind reliability backed by a lifetime warranty and free 24/7 technical support

## APPLICATION EXAMPLES

A pair of FlexPoint 10FL/T media converters are used to connect two 10BASE-T switches via fiber. A workstation and file server are connected to the network using pairs of FlexPoint 10FL/T media converters. In each case, multimode or single-mode fiber can be used, and fiber links can be extended up to 120km using single-mode fiber.



In this second application, a FlexPoint 10FL/T media converter is used to connect a Turnstile that is located beyond the distance supported by the copper infrastructure. Turnstile can be located in areas such as Mass Transit Stations, Airports, Stadiums, Amusement Parks, Office Lobbies, Ski Resorts and Casinos.



At the head end, a FlexPoint 10FL/T fiber-to-copper media converter is used to convert the copper connection from the network switch to fiber. The fiber cabling extends out to the FlexPoint 10FL/T that converts the fiber to coax and connects to the Turnstile. The network switch gathers data from the Turnstile, allowing or denying entry.

## SPECIFICATIONS

Description	FlexPoint 10FL/T 10BASE-T Copper to 10BASE-FL Fiber Media Converter		
Standard Compliances	IEEE 802.3		
Regulatory Compliances	Safety: EMI: ACT:	UL, cUL, CE, UKCA FCC Class A TAA, BAA, NDAA	
Environmental	RoHS, WEEE, REACH		
Frame Size	Supports unlimited frame sizes		
Port Types	Copper: Fiber:	10BASE-T (RJ-45) 10BASE-FL (ST,SC)	
Cable Types	Copper: Fiber:	EIA/TIA 568A/B, Cat 5 UTP and higher Multimode: 50/125µm, 62.5/125µm Single-mode: 9/125µm	
AC Power Requirements	AC Adapter:	100 - 240VAC/50 - 60Hz 0.02A @ 120VAC (typical)	
DC Power Requirements	Voltage Range: Nominal Voltage: Nominal Power:	Barrel Connector 8.0 to 15.0VDC 9VDC 0.2A @ 9VDC	Molex Connector 4.75 to 5.25VDC 5VDC 0.5A @ 5VDC
Dimensions W x D x H	3.0" x 4.0" x 1.0" (76.2 mm x 101.6 mm x 25.4 mm)		
Weight	Without AC Adapter:	6 oz. (170.1 grams)	
Temperature	Commercial: Storage:	0 to 50°C -40 to 80°C	
Humidity	5 to 95% (non-condensing)		
Altitude	-100m to 4,000m		
MTBF (hrs)	Without AC Adapter (-0): With AC Adapter (-1): With AC Adapter (-2):		1,700,000 250,000 100,000
Warranty	Lifetime warranty with 24/7/365 free Technical Support		



# ORDERING INFORMATION

## Step 1: Choose a Base Part Number (xxxx-p)

Fiber Type	Distance	Connector Type		Tx Lambda (nm)	Rx Lambda (nm)	Min. Tx Power (dBm)	Max. Tx Power (dBm)	Min. Rx Power (dBm)	Max. Rx Power (dBm)	Min. Attenuation (dB)	Link Budget (dB)
		ST	SC								
MM/DF	2km	4300-p	4303-p	850	850	-21	-11	-31	-11	-	10
MM/DF	5km	4302-p	-	1310	1310	-21	-11	-31	-11	-	10
SM/DF	30km	4301-p	-	1310	1310	-15	-8	-31	-8	-	16
SM/DF	60km	4304-p	-	1310	1310	-5	0	-31	-3	3	26
SM/DF	85km	-	4306-p	1550	1550	-7	0	-28	-3	3	21
SM/DF	120km	-	4307-p	1550	1550	-5	0	-31	-3	3	26

MM = Multimode, SM = Single-mode, DF = Dual Fiber

Contact Omnitron for other fiber options, operational temperature ranges and RoHS (5/6) compliant models.

## Step 2: Choose your Power Option (xxxx-p)

-0 = Barrel Connector, No AC/DC Power Adapter
-1 = Barrel Connector and US AC/DC Power Adapter, 100-240 VAC, 50-60Hz
-2 = Barrel Connector and Universal AC/DC Power Adapter, 100-240VAC, 50-60Hz (requires AC power cord)

## Operating Temperature

Commercial temperature (0 to 50°C)
------------------------------------



-1 = Barrel Connector and US AC/DC Power Adapter, 100-240 VAC, 50-60Hz



-2 = Barrel Connector and Universal AC/DC Power Adapter, 100-240VAC, 50-60Hz (requires AC power cord)

# ACCESSORIES

Model Number	Description	Model Number	Description
4380	Wall-Mounting Hardware Kit for Modules	4381	Wall-Mounting Hardware Kit for DC to DC Power Adapter
4384	DC to DC Power Adapter	4384-W	DC to DC Power Adapter, Wide Temperature (-40 to 60°C)
4385	14-Module Chassis with two 48VDC Power Supplies	4386	14-Module Chassis with one 48VDC Power Supply
4389	Spare 48VDC Power Supply	4392	5-Module Rack-Mount Shelf
4395	14-Module Chassis with two AC Power Supplies	4396	14-Module Chassis with one AC Power Supply
4399	Spare AC Power Supply	8250	DIN-Rail Mounting Kit

See all FlexPoint accessories on [FlexPoint Chassis and Mounting Options product page](#)