



**GENERAL**

This document supports revision "Rev. 2" of the 10FL/T. Please refer to the serial number label on the bottom of the 10FL/T for the revision number of your product. This revision incorporates the following change:

The 10FL/T always operates in Link Propagate mode. Both the fiber and copper ports must be connected to active equipment before an end-to-end link is established.

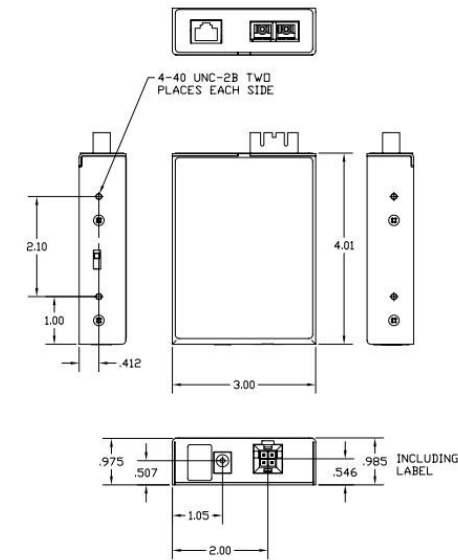
**DESCRIPTION**

The Omnitron FlexPoint 10FL/T media converter provides 10BASE-FL single-mode (SM) or multimode (MM) fiber to 10BASE-T twisted pair (UTP) media conversion. The 10FL/T is compliant with the IEEE 802.3 standards.

[See data sheet for supported models.](#)

It features a pair of ST or SC fiber connectors and an RJ-45 connector. The 10FL/T automatically supports Full and Half Duplex operations. It also features a crossover switch on the RJ-45 port.

**MECHANICAL**



**POWER ADAPTER NOTICE**

When used in a stand-alone configuration, this product should always be used with its enclosed Power Adapter.

**WARNING**

**Before plugging the Power Adapter to any wall outlet or AC power source, verify that the power on the unit is appropriate for your AC line voltage source.**

**SWITCH SETTINGS**

**RJ-45 Crossover Switch:** /

When connecting the RJ-45 port to a hub or switch, set the switch to straight through . When connecting to a PC or workstation, set the switch to crossover (factory default).

**Disable Auto-Negotiation on the attached copper device and manually set the port speed to 10Mbps.**

**MOUNTING**

The FlexPoint 10FL/T can be wall-mounted using a wall mounting kit (4380), rack-mounted using a 5-Module shelf (4392) or inserted in a 14-Module FlexPoint Powered Chassis. [See Chassis and Mounting Option product page.](#)

When wall or rack mounting, connect the barrel connector at the end of the wire on the power adapter to the barrel connector on the module. Connect the power adapter to the AC outlet. Confirm that the module has powered up properly by checking the Power LED.

**General and Copyright Notice**

This publication is protected by U.S. and international copyright laws. All rights reserved. The whole or any part of this publication may not be reproduced, stored in a retrieval system, translated, transcribed, or transmitted, in any form, or by any means, manual, electric, electronic, electromagnetic, mechanical, chemical, optical or otherwise, without prior explicit written permission of Omnitron Systems Technology, Inc.

The following trademarks are owned by Omnitron Systems Technology, Inc.: FlexPoint®, FlexSwitch™, iConverter®, miConverter®, NetOutlook®, OmniLight®, OmniConverter®, RuggedNet®, Omnitron Systems Technology, Inc.™, OST™ and the Omnitron logo.

All other company or product names may be trademarks of their respective owners.

The information contained in this publication is subject to change without notice. Omnitron Systems Technology, Inc. is not responsible for any inadvertent errors.

**Warranty**

This product is warranted to the original purchaser (Buyer) against defects in material and workmanship for a period of two (2) years from the date of shipment. A lifetime warranty may be obtained by the original purchaser by registering this product at [www.omnitron-systems.com/support](http://www.omnitron-systems.com/support) within ninety (90) days from the date of shipment. During the warranty period, Omnitron will, at its option, repair or replace a product which is proven to be defective with the same product or with a product with at least the same functionality.

For warranty service, the product must be sent to an Omnitron designated facility, at Buyer's expense. Omnitron will pay the shipping charge to return the product to Buyer's designated US address using Omnitron's standard shipping method.

Attach the fiber cables to the FlexPoint 10FL/T ST or SC connectors. The FlexPoint transmit (Tx) must attach to the receive side on the device at the far end of the fiber and the receive (Rx) must attach to the transmit side.

Connect a UTP cable to the RJ-45 port on the FlexPoint 10FL/T and connect the other end to a 10Mbps capable device. The crossover switch may need to be configured depending on the attached device. See RJ-45 Crossover Switch settings.

Both the fiber and RJ-45 ports must be connected in order for the unit to establish an end-to-end link.

**Disable Auto-Negotiation and manually set port speed to 10Mbps on the connected UTP device.**

**LED INDICATORS**

LED	Color	Description
Power	Yellow	Module has power
Polarity	Yellow	ON: Polarity reversal was detected and corrected.
Fiber Link	Green	ON: Device detected at the end of the fiber
Fiber Rx	Green	ON: Receive data on the fiber port
UTP Link	Green	ON: Device detected at the end of cable
UTP Rx	Green	ON: Receive data on RJ-45

**Limitation of Warranty**

The foregoing warranty shall not apply to product malfunctions resulting from improper or inadequate use and/or maintenance of the equipment by Buyer, Buyer-supplied equipment, Buyer-supplied interfacing, unauthorized modifications or tampering with equipment (including removal of equipment cover by personnel not specifically authorized and certified by Omnitron), or misuse, or operating outside the environmental specification of the product (including but not limited to voltage, ambient temperature, radiation, unusual dust, etc.), or improper site preparation or maintenance. No other warranty is expressed or implied. Omnitron specifically disclaims the implied warranties of merchantability and fitness for any particular purpose.

The remedies provided herein are the Buyer's sole and exclusive remedies. Omnitron shall not be liable for any direct, indirect, special, incidental, or consequential damages, whether based on contract, tort, or any legal theory.

**SPECIFICATIONS**

<b>Standard Compliances</b>	IEEE 802.3	
<b>Regulatory Compliances</b>	Safety: EMI: ACT:	UL, cUL, CE, UKCA FCC Class A TAA, BAA, NDAA
<b>Environmental</b>	RoHS, REACH, WEEE	
<b>Frame Size</b>	Unlimited	
<b>Port Types</b>	Copper: Fiber:	10BASE-T (RJ-45) 10BASE-FL (ST, SC)
<b>Cable Types</b>	Copper: Fiber:	EIA/TIA 568A/B, Cat 5 and higher Multimode: 50/125µm, 62.5/125µm Single-mode: 9/125µm
<b>AC Power Requirements</b>	AC Adapter:	100 - 240VAC/50 - 60Hz 0.02A @ 120VAC (max)
<b>DC Power Requirements</b>	DC Input: (AC Adapter)	+8.0 to +15.0VDC 0.2A @ 9VDC 2.5mm Barrel Connector
	DC Input: (Molex Connector)	+4.75 to +5.25VDC, 0.5A @ 5VDC

**Environmental Notices**

The equipment covered by this manual must be disposed of or recycled in accordance with the Waste Electrical and Electronic Equipment Directive (WEEE Directive) of the European Community directive 2012/19/EU on waste electrical and electronic equipment (WEEE) which, together with the RoHS Directive 2015/863/EU, for electrical and electronic equipment sold in the EU after July 2019. Such disposal must follow national legislation for IT and Telecommunication equipment in accordance with the WEEE directive: (a) Do not dispose waste equipment with unsorted municipal and household waste. (b) Collect equipment waste separately. (c) Return equipment using collection method agreed with Omnitron.

The equipment is marked with the WEEE symbol shown to indicate that it must be collected separately from other types of waste. In case of small items the symbol may be printed only on the packaging or in the user manual. If you have questions regarding the correct disposal of equipment go to [www.omnitron-systems.com/support](http://www.omnitron-systems.com/support) or e-mail to Omnitron at [intlinfo@omnitron-systems.com](mailto:intlinfo@omnitron-systems.com).



<b>Dimensions W x D x H</b>	3.0" x 4.0" x 1.0" (76.2 mm x 101.6 mm x 25.4 mm)	
<b>Weight</b>	6 oz. (170.1 grams)	
<b>Temperature</b>	0 to 50°C	
<b>Humidity</b>	5 to 95% (non-condensing)	
<b>Altitude</b>	-100m to 4,000m	
<b>MTBF (hrs)</b>	Module:	1,700,000
	AC Adapter (-1):	250,000
	AC Adapter (-2):	100,000
<b>Warranty</b>	Lifetime warranty with 24/7/365 free Technical Support	

**Technical Support:**

Phone: (949) 250-6510  
 Fax: (949) 250-6514  
 Address: Omnitron Systems Technology  
 38 Tesla  
 Irvine, CA 92618 USA  
 E-mail: [support@omnitron-systems.com](mailto:support@omnitron-systems.com)  
 URL: <http://www.omnitron-systems.com>

040-04300-003J 7/24

Please complete both sides and mail or fax this registration form to:  
**User Warranty Registration**  
 Omnitron Systems Technology, Inc.  
 38 Tesla  
 Irvine, CA 92618 USA  
 Fax: (949) 250-6514

Name: \_\_\_\_\_  
 Company: \_\_\_\_\_  
 Address: \_\_\_\_\_  
 City: \_\_\_\_\_ State: \_\_\_\_\_ Zip Code: \_\_\_\_\_  
 Country: \_\_\_\_\_  
 Phone: \_\_\_\_\_ Fax: \_\_\_\_\_  
 E-mail: \_\_\_\_\_

Please register on-line @ <http://www.omnitron-systems.com> or complete both sides and mail or fax this registration form to:

FlexPoint Type:  10FL/T  10FL/2  10T/2  Other \_\_\_\_\_  
 Model: \_\_\_\_\_  
 Serial Number: \_\_\_\_\_ Purchase Date: \_\_\_\_\_  
 Purchased From: \_\_\_\_\_  
 Address: \_\_\_\_\_  
 City: \_\_\_\_\_ State: \_\_\_\_\_ Zip Code: \_\_\_\_\_  
 Country: \_\_\_\_\_  
 Comments and Suggestions: \_\_\_\_\_

Please complete both sides of this form

Please complete both sides of this form