



DESCRIPTION

The FlexPoint 100Fx/Tx media converter provides 100BASE-FX single-mode (SM) or multimode (MM) fiber to 100BASE-TX RJ-45.

It features a pair of ST, SC or LC fiber connectors and an RJ-45 connector. The 100Fx/Tx supports Full/Half Duplex operations and features a UTP crossover switch.

[See data sheet for supported models.](#)

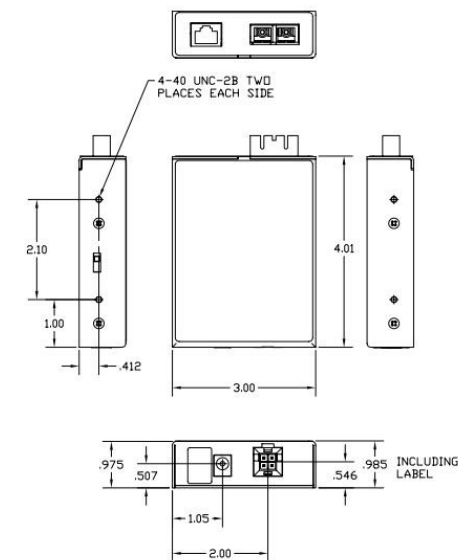
POWER ADAPTER NOTICE

When used in a stand-alone configuration, this product should always be used with its enclosed Power Adapter.

WARNING

Before plugging the Power Adapter to any wall outlet or AC power source, verify that the power on the unit is appropriate for your AC line voltage source.

MECHANICAL



SWITCH SETTINGS

RJ-45 Crossover Switch: /

When connecting the RJ-45 port to a hub or switch, set the switch to straight through . When connecting to a PC or workstation, set the switch to crossover (factory default).

Operation Switch: Auto-Neg / Manual

When in Manual, the FlexPoint operation is selected by the Duplex switch.

When in Auto-Neg (factory default), the FlexPoint automatically selects Full or Half-Duplex depending on the Duplex switch position and the features of the UTP connected device.

Duplex Switch: Full-Duplex / Half-Duplex

When the Operation switch is in the Manual position, the Duplex switch determines the type of duplex operation.

When the Operation switch is in the Auto-Neg position, the Duplex switch advertises its setting to the UTP connected device.

When Duplex switch is set to Half-Duplex, the FlexPoint will operate in Half-Duplex.

When Duplex switch is set to Full-Duplex (factory default), the FlexPoint will operate in Full-Duplex or Half-Duplex depending on the features supported by the UTP connected device.

Half-Duplex must be used when connecting to a hub. Full-Duplex can be used when connecting switches or between a switch and a Full-Duplex workstation.

General and Copyright Notice

This publication is protected by U.S. and international copyright laws. All rights reserved. The whole or any part of this publication may not be reproduced, stored in a retrieval system, translated, transcribed, or transmitted, in any form, or by any means, manual, electric, electronic, electromagnetic, mechanical, chemical, optical or otherwise, without prior explicit written permission of Omnitron Systems Technology, Inc.

The following trademarks are owned by Omnitron Systems Technology, Inc.: FlexPoint®, FlexSwitch™, iConverter®, miConverter®, NetOutlook®, OmniLight®, OmniConverter®, RuggedNet®, Omnitron Systems Technology, Inc.™, OST™ and the Omnitron logo.

All other company or product names may be trademarks of their respective owners.

The information contained in this publication is subject to change without notice. Omnitron Systems Technology, Inc. is not responsible for any inadvertent errors.

Warranty

This product is warranted to the original purchaser (Buyer) against defects in material and workmanship for a period of two (2) years from the date of shipment. A lifetime warranty may be obtained by the original purchaser by registering this product at www.omnitron-systems.com/support within ninety (90) days from the date of shipment. During the warranty period, Omnitron will, at its option, repair or replace a product which is proven to be defective with the same product or with a product with at least the same functionality.

For warranty service, the product must be sent to an Omnitron designated facility, at Buyer's expense. Omnitron will pay the shipping charge to return the product to Buyer's designated US address using Omnitron's standard shipping method.

MOUNTING

The FlexPoint 100Fx/Tx can be wall mounted using a wall mounting kit (4380), rack-mounted using a 5-Module shelf (4392) or inserted in a 14-Module FlexPoint Powered Chassis.

When wall or rack mounting, connect the barrel connector at the end of the wire on the power adapter to the barrel connector on the module. Connect the power adapter to the AC outlet. Confirm that the module has powered up properly by checking the Power LED.

Attach the fiber cables to the FlexPoint 100Fx/Tx ST, SC or LC connectors. The FlexPoint transmit (Tx) must attach to the receive side on the device at the far end of the fiber and the receive (Rx) must attach to the transmit side.

Connect a UTP cable to the RJ-45 port on the FlexPoint 100Fx/Tx and connect the other end to a 100Mbps capable device. The crossover switch may need to be configured depending on the attached device. See RJ-45 Crossover Switch settings.

LED INDICATORS

LED	Color	Description
Power	Yellow	Module has power
Auto-Neg	Green	ON: Auto-negotiation is selected
Full-Duplex	Green	ON: Full-Duplex is selected
Half-Duplex	Green	ON: Half-Duplex is selected
Fiber Lk/Rx	Green	ON: Device detected at the end of the fiber Blinking: Data received
Fiber Error	Red	ON: Fiber data errors detected
UTP Lk/Rx	Green	ON: Device detected at the end of the UTP Blinking: Data received
UTP Error	Red	ON: UTP data errors detected

Limitation of Warranty

The foregoing warranty shall not apply to product malfunctions resulting from improper or inadequate use and/or maintenance of the equipment by Buyer, Buyer-supplied equipment, Buyer-supplied interfacing, unauthorized modifications or tampering with equipment (including removal of equipment cover by personnel not specifically authorized and certified by Omnitron), or misuse, or operating outside the environmental specification of the product (including but not limited to voltage, ambient temperature, radiation, unusual dust, etc.), or improper site preparation or maintenance.

No other warranty is expressed or implied. Omnitron specifically disclaims the implied warranties of merchantability and fitness for any particular purpose.

The remedies provided herein are the Buyer's sole and exclusive remedies. Omnitron shall not be liable for any direct, indirect, special, incidental, or consequential damages, whether based on contract, tort, or any legal theory.

SPECIFICATIONS

Standard Compliances	IEEE 802.3	
Regulatory Compliances	Safety: EMI: ACT:	UL, cUL, CE, UKCA FCC Class A TAA, BAA, NDA
Environmental	RoHS, REACH, WEEE	
Port Types	Copper: Fiber:	100BASE-TX (RJ-45) 100BASE-FX (ST,SC,MT-RJ, LC)
Cable Types	Copper: Fiber:	EIA/TIA 568A/B, Cat 5 and higher Multimode: 50/125µm, 62.5/125µm Single-mode: 9/125µm
AC Power Requirements	AC Adapter:	100 - 240VAC/50 - 60Hz 0.03A @ 120VAC (max)
DC Power Requirements	DC Input: (AC Adapter)	+6.0 to +15.0VDC 0.3A @ 9VDC 2.5mm Barrel Connector
	DC Input: (Molex Connector)	+4.75 to +5.25VDC, 0.5A @ 5VDC

Environmental Notices

The equipment covered by this manual must be disposed of or recycled in accordance with the Waste Electrical and Electronic Equipment Directive (WEEE Directive) of the European Community directive 2012/19/EU on waste electrical and electronic equipment (WEEE) which, together with the RoHS Directive 2015/863/EU, for electrical and electronic equipment sold in the EU after July 2019. Such disposal must follow national legislation for IT and Telecommunication equipment in accordance with the WEEE directive: (a) Do not dispose waste equipment with unsorted municipal and household waste. (b) Collect equipment waste separately. (c) Return equipment using collection method agreed with Omnitron.

The equipment is marked with the WEEE symbol shown to indicate that it must be collected separately from other types of waste. In case of small items the symbol may be printed only on the packaging or in the user manual. If you have questions regarding the correct disposal of equipment go to www.omnitron-systems.com/support or e-mail to Omnitron at intlinfo@omnitron-systems.com.



Dimensions W x D x H	3.0" x 4.0" x 1.0" (76.2 mm x 101.6 mm x 25.4 mm)	
Weight	6 oz. (170.1 grams)	
Temperature	Commercial: Wide:	0 to 50°C -40 to 60°C
Humidity	5 to 95% (non-condensing)	
Altitude	-100m to 4,000m	
MTBF (hrs)	Module:	930,000
	AC Adapter (-1):	250,000
	AC Adapter (-2):	100,000
Warranty	Lifetime warranty with 24/7/365 free Technical Support	

Technical Support:

Phone: (949) 250-6510
 Fax: (949) 250-6514
 Address: Omnitron Systems Technology
 38 Tesla
 Irvine, CA 92618 USA
 E-mail: support@omnitron-systems.com
 URL: <http://www.omnitron-systems.com>

040-04330-001J 7/24

User Warranty Registration
 Please complete both sides and mail or fax this registration form to:
 Omnitron Systems Technology, Inc.
 38 Tesla
 Irvine, CA 92618 USA
 Fax: (949) 250-6514

Name: _____
 Company: _____
 Address: _____
 City: _____ State: _____ Zip Code: _____
 Country: _____
 Phone: _____ Fax: _____
 E-mail: _____

Please complete both sides of this form

User Warranty Registration
 Please register on-line @ <http://www.omnitron-systems.com> or complete both sides and mail or fax this registration form to:

FlexPoint Type: _____
 Model: _____
 Serial Number: _____ Purchase Date: _____
 Purchased From: _____
 Address: _____
 City: _____ State: _____ Zip Code: _____
 Country: _____
 Comments and Suggestions: _____

Please complete both sides of this form