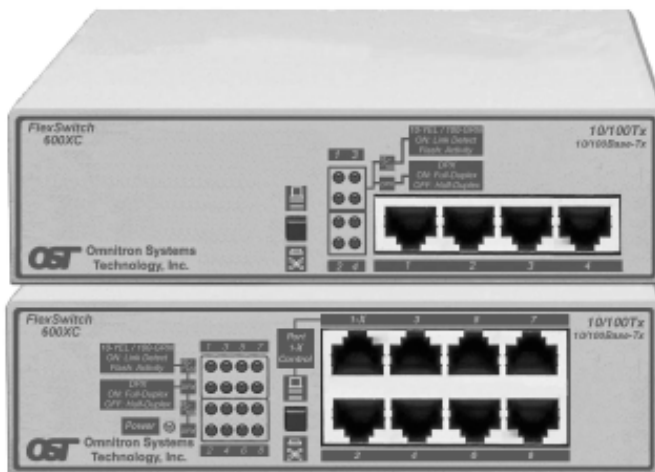


FlexSwitch™ 600XC 4U and 8U

4-Port and 8-Port 10/100 UTP Compact Switches



FEATURES

- 4-port and 8-port Layer 2 compact switches offering 10/100 UTP ports for links to workstations, servers and other switches.
- Supports 10Base-T/100Base-Tx and IEEE 802.3 specifications.
- Flow control per 802.3x specification.
- Delivers full wire-speed over all ports simultaneously.
- All UTP ports support 10/100 auto-sensing and half/full duplex auto-negotiation.
- Models 6501 and 6701 feature port management.
- Features a crossover switch for easy connection to other hubs and switches.
- Available with external power adapter or internal power supply.
- Software-independent.
- Lifetime warranty.

DESCRIPTION

The FlexSwitch 600XC 4U and 8U compact switches provide Layer 2 switching. They deliver powerful 10/100 switching bandwidth to distributed and small workgroup applications.

Each UTP port auto-senses 10/100 and auto-negotiates half/full duplex operations, which allows the FlexSwitch 600XC 4U and 8U to seamlessly integrate Fast Ethernet (100 Mbps) and legacy Ethernet (10 Mbps) stations and servers, and provide a migration path to newer technologies.

Using the store-and-forward technology with 1-Mbyte buffer memory, the FlexSwitch 600XC 4U and 8U support a full wire-speed of 148,800 64-byte packets per second simultaneously on all ports.

Using the 802.3x advanced flow control specification, the FlexSwitch 600XC controls the flow of data in order to ensure data integrity.

Featuring port management, the FlexSwitch 600XC 4U has the ability to configure UTP ports to a particular speed (10 or 100 Mbps) or duplex mode (half or full duplex) through the use of switches. This feature can be used when the connected device is unable to provide its own mode of operation to the switch.

As Layer 2 switches, each port of the FlexSwitch 600XC 4U and 8U is capable of MAC address learning and aging as well as packet filtering and forwarding. It checks all packets and discards

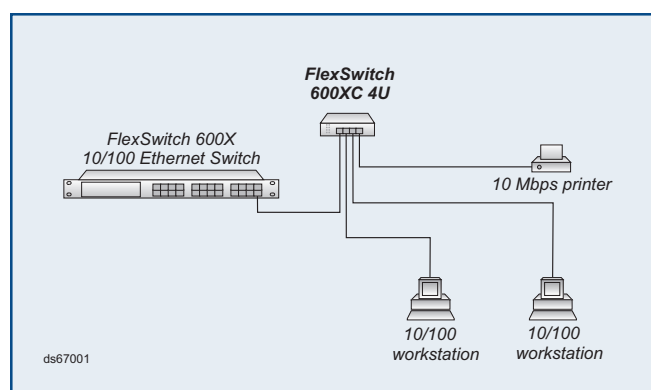
all illegal or corrupted packets thus providing fragment-free packet forwarding and enhancing the overall network performance.

The FlexSwitch 600XC 4U and 8U are plug-and-play capable right out of the box, requiring no user configuration. They support a crossover MDI/MDI-X switch on UTP Port One for uplink applications, eliminating the need for a crossed cable.

SAMPLE APPLICATIONS

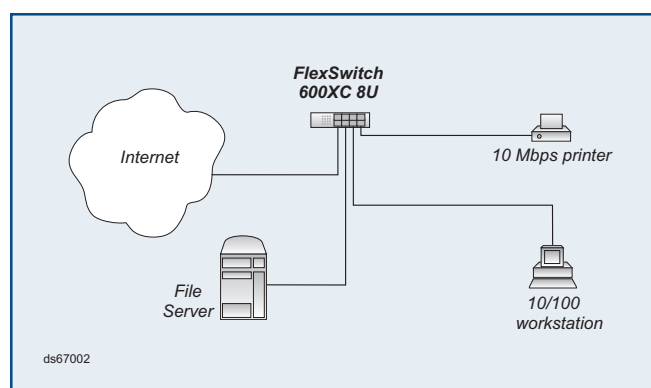
Application 1. Remote Workgroups

This application shows a FlexSwitch 600XC 4U connecting two 10/100 workstations and a legacy 10 Mbps printer to a 24-port 10/100 switch via UTP cable. Because the connections between these switches are switched and in full duplex, the transfer rate between them will be 200 Mbps.



Application 2. Small Office Workgroup

This application depicts a small office environment using the FlexSwitch 600XC 8U for local area networking to give access to resources such as printers and file servers.



SPECIFICATIONS

- **Protocol:**
 - Ethernet IEEE 802.3
 - Fast Ethernet 10Base-T
 - Flow Control 100Base-Tx
 - 802.3x
- **Basic Features:**
 - MAC Addresses 1,000
 - Buffer size 1 MB
- **Connector and Cable**
 - Twisted Pair UTP RJ45, Category 5 (EIA/TIA 568)
- **Supported Distances**
 - Twisted Pair UTP: 100 m / 328 ft.
- **LED Indicators**

Function	Color & Description
UTP:	Green/yellow
Yellow On:	10
Green On:	100
Flashing:	Activity detected
Full/Half Duplex:	Green
Off:	Set to half duplex
On:	Set to full duplex
- **Dimensions/Weight:**
 - Models 6700, 6701: W:6.0"xD:4.0"xH:1.75" / 0.5 lb.
 - (External power adapter)
 - Models 6500, 6501: W:6.5"xD:8.0"xH:1.75" / 1.5 lb.
 - (Internal power supply)
- **Power:**
 - External: 9 VDC/1.2 Amp
 - (Models 6700, 6701)
 - Internal: 110/230 VAC, 50/60 Hz, 300mA
 - (Models 6500, 6501)
- **Temperature:**
 - Operating 0 to 50 degrees C
 - Storage -40 to 75 degrees C
- **Humidity:** 0-90% (non-condensing)

ORDERING INFORMATION

Model Description

Models with External Power Adapter (110V, US Standard):

6700 8 10/100 UTP ports
6701 4 10/100 UTP ports

Models with Internal Power Supply (110/230V, Universal):

6500 8 10/100 UTP ports
6501 4 10/100 UTP ports

Trademarks are owned by their respective companies.
FlexSwitch is a trademark of Omnitron Systems Technology, Inc.
Specifications subject to change without notice.
©2000-2001 Omnitron Systems Technology, Inc.

**Ost Omnitron Systems
Technology, Inc.**

27 Mauchly #201, Irvine, CA 92618
Tel: (949) 250-6510 Fax: (949) 250-6514
E-mail: info@omnitron-systems.com
<http://www.omnitron-systems.com>